

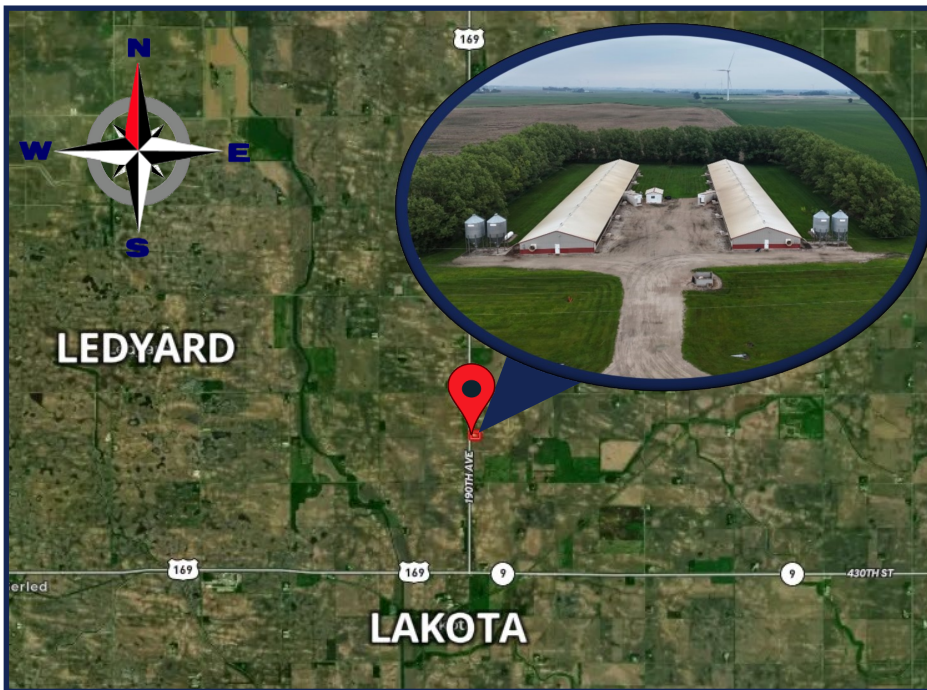


**Two - 2,080 Head
Wean to Finish Spaces
4.83 Acres M/L**

Kossuth County, IA

**4406 Hwy 169
Lakota, IA**

\$873,600 (\$210/space)



Property Highlights

- Opportunity to own a well maintained wean to finish site, with extensive capital improvements in 2020. **See page 2 for a full list of details.**
- Two room design built in 2000 with outer dimensions of 51' x 318' per barn.
- Power natural ventilated buildings, with small pen design, SS dry feeders with double cup waterers per pen.
- **Roofs replaced in 2015**
- Contract grower agreement with triple net terms has approximately 4 years remaining with major pig producer. Subject to assignment approval.
- Longer contract without triple net terms potentially available, subject to approval.

Call Agent for Details



DEAN SCHOTT

Real Estate Agent

Licensed In IA, IL, MN, MO & NE

📞 319-631-0050

✉️ dean@growthland.com



**SCOTT
BORCHARDING**

Associate Real Estate Broker

Licensed In IA & MN

📞 515-708-6033

✉️ scott@growthland.com

Two - 2,080 Head Wean to Finish Spaces 4.83 Acres M/L

Aerial Map



- Two - 51' x 318' Wean to Finish barns
- Bio-secure office with shower, restroom, and laundry
- Enclosed load chutes
- 2 - 36 ton bins in tandem per barn
- Well on-site

2020 Capital Improvements

- Bio-Secure office built with shower, restroom, and laundry facilities
- Installed attached covered load-outs for each facility
- New gating package to maintain 35 head pens in each barn
- New 70" SS Feeders throughout
- Installed new ceiling with white steel
- New VALCO Controllers for each room
- Re-insulated attics in both buildings
- Added actuated inlets
- All new feedlines and parts installed
- Added one 36" fan per room in each barn
- Added waterlines and misters on the ceilings
- SS cup waters installed in each pen
- Upgraded brooder heaters



Two - 2,080 Head Wean to Finish Spaces 4.83 Acres M/L

Site Overview		
Building Type:	Wean to Finish	
Year Built:	2000	
Size:	51' x 318'	51' x 318'
Pig Spaces:	2,080	2,080
Number of Rooms:	2	2
Interior Room Dimensions:	50' x 154' ID	50' x 154' ID
Pens per Room:	(28) 10' x 23' 7" (4) 7' x 23' 7"	(28) 10' x 23' 7" (4) 7' x 23' 7"
Office/WR:	Workroom, Shower, Restroom, Washer and Dryer	
Pit Depth:	8' Deep	8' Deep
Ventilation:	Power - Natural	Power - Natural
Ventilation Controller:	Valco Ventra Pro	Valco Ventra Pro
Emergency System(s):	Hawk Alarm System/ Power Drops	
Ceiling:	White Steel	White Steel
Flooring:	Concrete Slats	Concrete Slats
Feed System:	Flex Flow 300/Tandem	Flex Flow 300/Tandem
Feeders:	(16) Dry Feeders	(16) Dry Feeders
Waterers:	(60) SS Cup Waterers	(60) SS Cup Waterers
Load Out:	Attached Enclosed	
Taxes:	\$1,072.00	

DISCLAIMER

The Seller has supplied the information contained in this Document. Growthland has not audited or otherwise confirmed this information and makes no representations, expressed or implied, as to its accuracy or completeness or the conclusions to be drawn and shall in no way be responsible for the content, accuracy, and truthfulness of such information. Any and all representations shall be made solely by the Seller as set forth in a signed agreement or purchase contract, which agreement or contract shall control the representations and warranties, if any. The marketing information presented in this material is the result of the Seller's representations and research utilizing sources and materials considered to be reliable and to contain information deemed to be relevant to the Properties but without any guarantees or specific statements or implied warranties. Properties being sold "as-is; where-is". By requesting this information package, the recipient acknowledges the responsibility to perform a due diligence review prior to any acquisition of in whole or in part and or merger or interest with or of the Seller.



West Aerial



Southwest View



Northwest View



Southeast View



Bio-Secure Office



Interior Load Chute



Room View



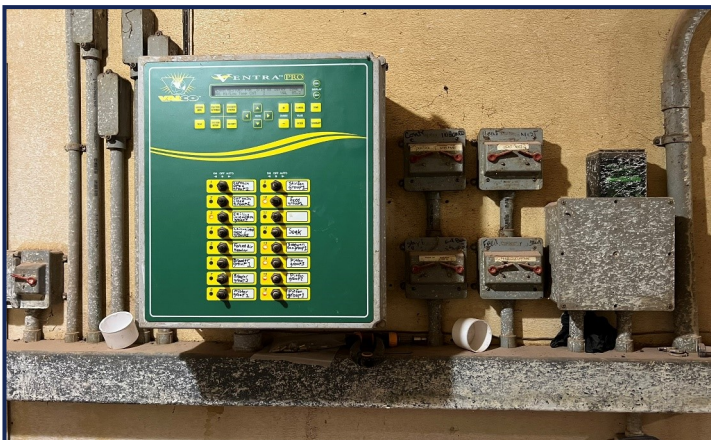
Room View



Pen Design



Feeder



Controller



Alarm System