

Growthland

Appraisals, Management, Brokerage, & Advising

FARMLAND FOR SALE

Black Hawk County
89 Acres M/L

Glessner Farm

\$1,468,500 (\$16,500/A)



JOHN AIRY

*Real Estate Agent, Farm Manager
Auctioneer*

Licensed In Iowa

☎ 319-350-0474

✉ john@growthland.com

www.growthland.com

5475 Dyer Ave, Suite 141 Marion, IA 52302
Office: 319-377-1143

Property Details

Black Hawk County
89 Acres M/L

Legal Description

The North Half of the Southwest Quarter of Section 7, Township 87 North, Range 13, West of the 5th P.M. Black Hawk County, Iowa.

Township: Eagle

Location

Located 5 miles southeast of Hudson, bordered to the west by Acker Road.

Acreage Breakdown:

Taxable Acres: 88.57
Tillable Acres: 86.3
FSA Acres: 88.34

Soil Productivity: **Tillable CSR2:** 85.5

Property Taxes: \$3,336.00

Parcel Numbers: 871307301001
871307326001

School District: Hudson Community Schools

FSA Farm Base Acres: **Corn Base Acres:** 41.3
Corn PLC Yield: 191
Soybean Base Acres: 40.6
Soybean PLC Yield: 43

Comments:

This bare land parcel presents a great opportunity to purchase a highly productive tract of farmland. With excellent soil types and gentle topography, this farm would be a valuable complement to an existing operation or an excellent investment in a robust agricultural area, providing steady returns for the non-farming buyer. Tile maps are available upon request.

Growthland

Appraisals, Management, Brokerage, & Advising

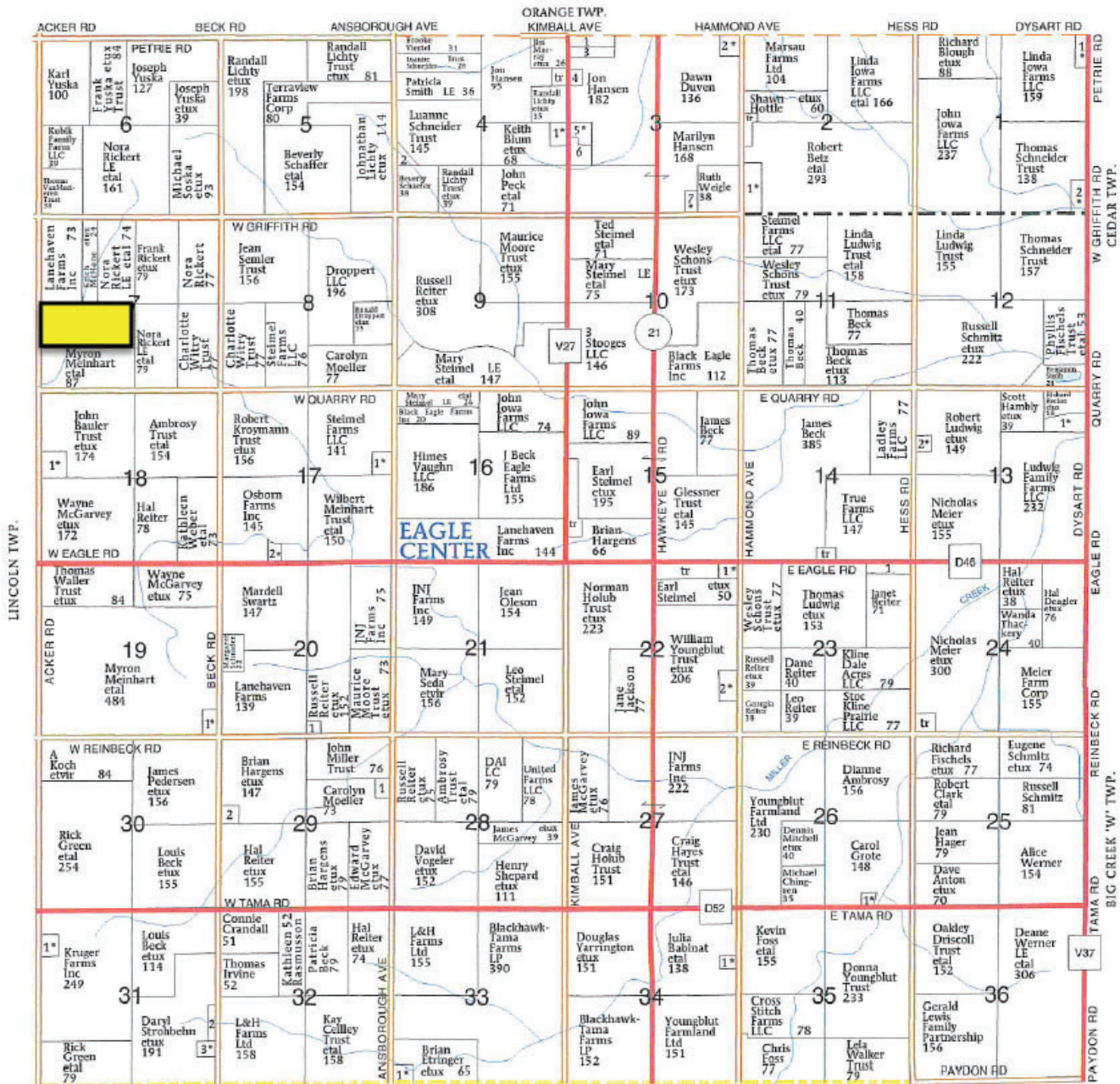
Plat Map

Black Hawk County 89 Acres M/L

T-87-N

EAGLE PLAT
(Landowners)

R-13-W



TAMA CO.

DISCLAIMER: All information contained in this document has been provided by the subject company to Growthland and, while believed to be correct, has not been verified. Accordingly, Growthland makes no representations or warranties as to the accuracy and truthfulness of such information. The recipient hereof acknowledges that Growthland shall not be liable for any loss or injury suffered by said recipient in any way connected to the delivery by Growthland of this document.

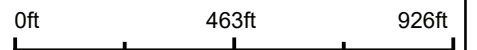
Aerial Map



©2023 AgriData, Inc.

Growthland

Boundary Center: 42.360808, -92.411586



7-87N-13W
Black Hawk County
Iowa

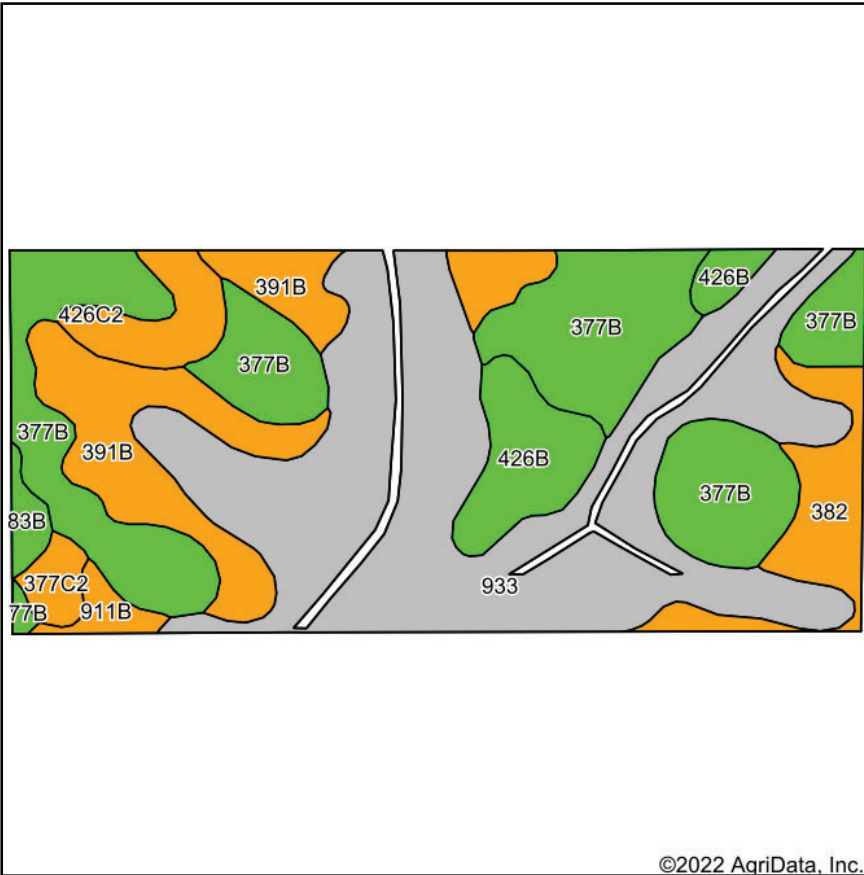


Maps Provided By:



© AgriData, Inc. 2023 www.AgriDataInc.com

Subject Property



Soils data provided by USDA and NRCS.



State: **Iowa**
 County: **Black Hawk**
 Location: **7-87N-13W**
 Township: **Eagle**
 Acres: **86.3**

Growthland

Maps Provided By:



Area Symbol: IA013, Soil Area Version: 29					
Code	Soil Description	Acres	Percent of field	CSR2 Legend	CSR2**
933	Sawmill silty clay loam, shallow loess, 0 to 2 percent slopes, occasionally flooded	34.55	40.0%		78
377B	Dinsdale silty clay loam, 2 to 5 percent slopes	24.36	28.2%		94
391B	Clyde-Floyd complex, 1 to 4 percent slopes	11.41	13.2%		87
426B	Aredale loam, 2 to 5 percent slopes	5.24	6.1%		91
382	Maxfield silty clay loam, 0 to 2 percent slopes	4.69	5.4%		87
426C2	Aredale loam, 5 to 9 percent slopes, moderately eroded	2.96	3.4%		83
377C2	Dinsdale silty clay loam, 5 to 9 percent slopes, eroded	1.21	1.4%		85
911B	Colo-Ely complex, 0 to 5 percent slopes	1.03	1.2%		86
83B	Kenyon loam, 2 to 5 percent slopes	0.85	1.0%		90
Weighted Average					85.5

**IA has updated the CSR values for each county to CSR2.
 Soils data provided by USDA and NRCS.

DISCLAIMER: All information contained in this document has been provided by the subject company to Growthland and, while believed to be correct, has not been verified. Accordingly, Growthland makes no representations or warranties as to the accuracy and truthfulness of such information. The recipient hereof acknowledges that Growthland shall not be liable for any loss or injury suffered by said recipient in any way connected to the delivery by Growthland of this document.



- Legend**
- Non-Cropland
 - CRP
 - Iowa PLSS
 - Cropland
 - Tract Boundary
 - Iowa Roads

Wetland Determination Identifiers

- Restricted Use
- ▼ Limited Restrictions
- Exempt from Conservation Compliance Provisions

Tract Cropland Total: 86.30 acres

2023 Program Year

Map Created March 16, 2023

Farm 6218

Tract 586

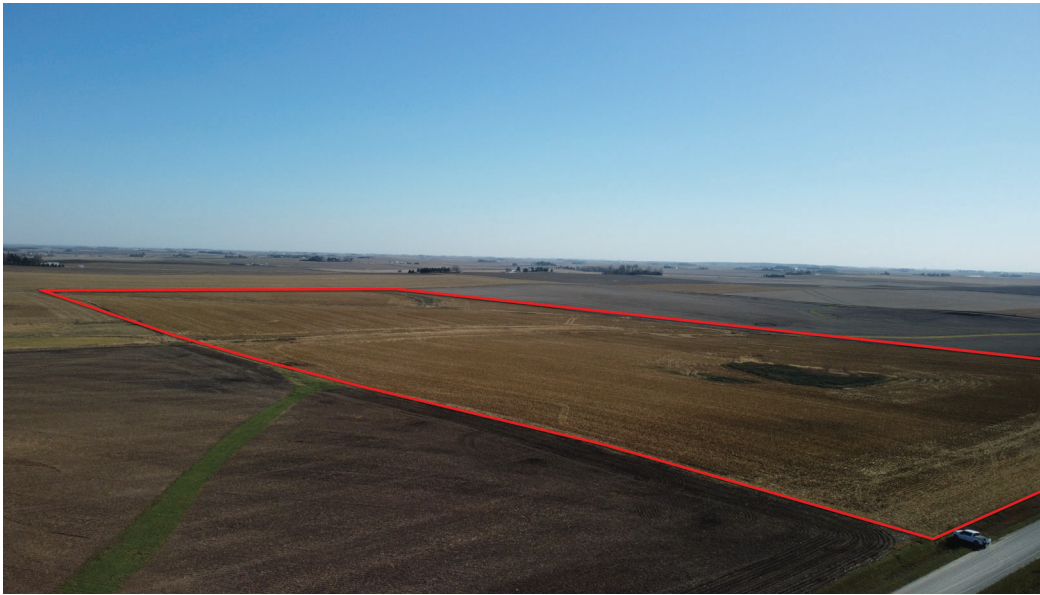
United States Department of Agriculture (USDA) Farm Service Agency (FSA) maps are for FSA Program administration only. This map does not represent a legal survey or reflect actual ownership; rather it depicts the information provided directly from the producer and/or National Agricultural Imagery Program (NAIP) imagery. The producer accepts the data 'as is' and assumes all risks associated with its use. USDA-FSA assumes no responsibility for actual or consequential damage incurred as a result of any user's reliance on this data outside FSA Programs. Wetland identifiers do not represent the size, shape, or specific determination of the area. Refer to your original determination (CPA-026 and attached maps) for exact boundaries and determinations or contact USDA Natural Resources Conservation Service (NRCS).

USDA is an equal opportunity provider, employer, and lender.



Property Photos

Black Hawk County
89 Acres M/L



View from the northwest looking southeast



View from the southwest looking northeast

DISCLAIMER: All information contained in this document has been provided by the subject company to Growthland and, while believed to be correct, has not been verified. Accordingly, Growthland makes no representations or warranties as to the accuracy and truthfulness of such information. The recipient hereof acknowledges that Growthland shall not be liable for any loss or injury suffered by said recipient in any way connected to the delivery by Growthland of this document.