

# Growthland

**4,600 Pig Spaces**  
**Available for Long Term Contract Finishing Arrangement**  
**Buena Vista County, IA**



## Property Highlights

- Design: Double Wide Two Room 2,300 Pig Space Wean to Finish barn
- Ventilation: Tunnel Ventilation & Expert Series Two Controllers
- Pen Design: Large pen design, with pre-sort
- Feeders: Wet-Dry Feeders
- Labor: Current labor is in place
- Desired Contract Terms: TBD; Owner desires a long-term contract and willing to invest in the site. Site is currently available.

### Contact us:

5475 Dyer Ave, #141  
Marion, IA 52302  
Office: (319) 377-1143  
[www.growthland.com](http://www.growthland.com)

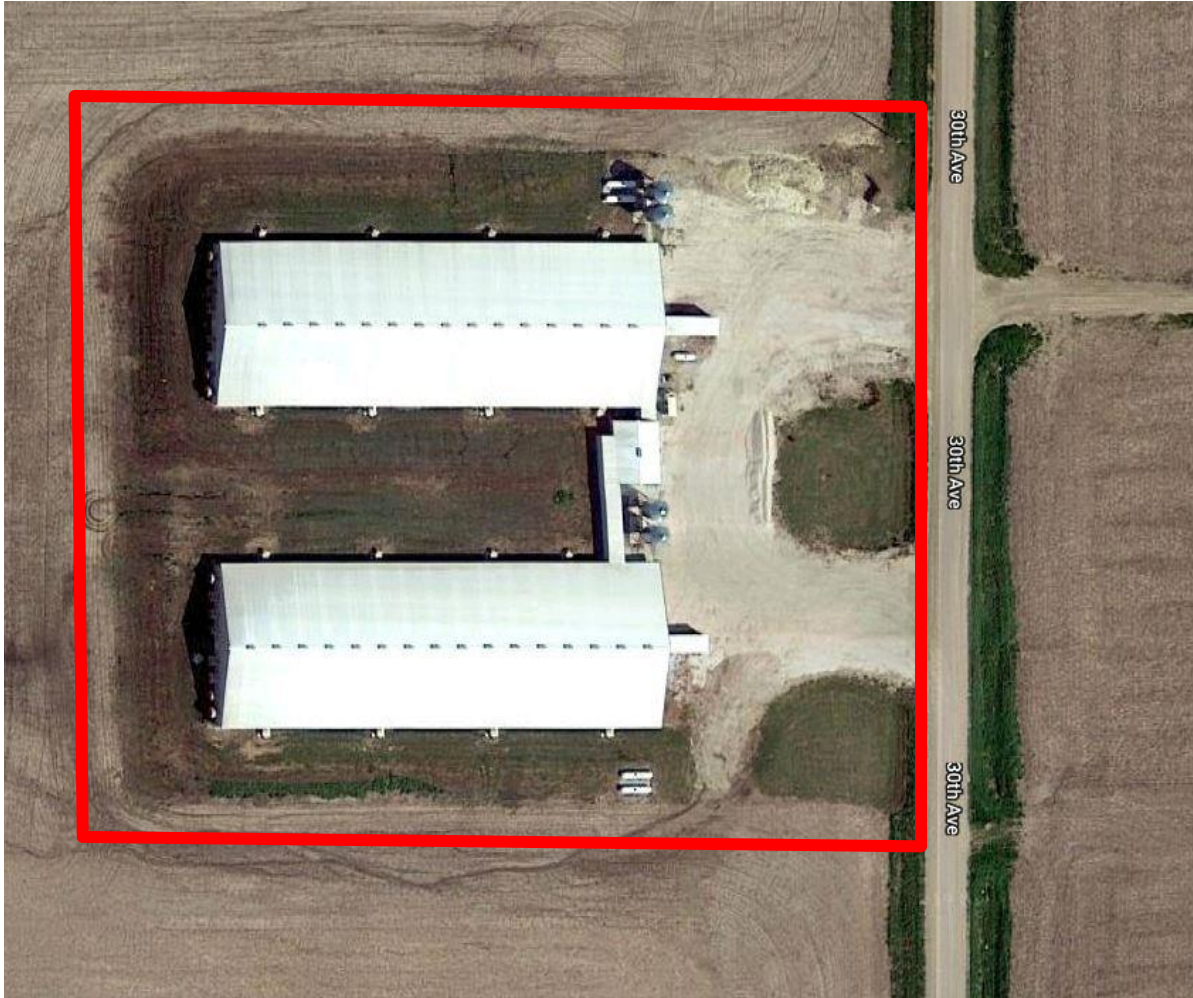
Dean Schott, Licensed in Iowa  
dean@growthland.com  
Cell: 319-631-0050

The information gathered for this brochure is from sources deemed reliable, but cannot be guaranteed by Growthland or its staff. All acres are considered more or less.

# Growthland

---

**4.3 Acres**



**This site is a 4,600 head Wean/Finish site in Buena Vista County, Iowa. This 4.3 Acre site has (2) 80' x 224' Wean Finish Buildings with permanent enclosed load outs. A 24' x 30' Bio-secure office and connecting hallway is located between the 2 WF buildings and has complete shower and laundry facilities. Water is supplied by an on-site well along with a 80 KW backup generator for emergency power.**

**\*Spaces could vary based on pig producer specifications.**

# Growthland

Site Overview		
<b>Building Type:</b>	South WF	
<b>Year Built:</b>	2012	
<b>Size:</b>	81' x 225'	
<b>Pig Spaces:</b>	2,300	2,300
<b>Number of Rooms:</b>	1	1
<b>Interior Room Dimensions:</b>	80'2" x 224'	80'2" x 224'
<b>Pens per Room:</b>	(20) - 22'4"x 38'6"	(20) - 22'4"x 38'6"
<b>Office/WR:</b>	24' x 30' w/connecting hall	
<b>Pit Depth:</b>	10'	10'
<b>Ventilation:</b>	Power - Tunnel	Power - Tunnel
<b>Ventilation Controller:</b>	EXPERT Basic	EXPERT Basic
<b>Emergency System(s):</b>	Barn Talk	Barn Talk
<b>Ceiling:</b>	White Painted Steel	White Painted Steel
<b>Flooring:</b>	Concrete Gang Slat	Concrete Gang Slat
<b>Feed System:</b>	Model 75/350 Flex TO TT	Model 75/350 Flex TO TT
<b>Feeders:</b>	40 - 36" x 56" Wet Dry	40 - 36" x 56" Wet Dry
<b>Waterers:</b>	SS Water Cups	SS Water Cups
<b>Load Out:</b>	Enclosed Loadout	

# Growthland

---

## Photos



**South View**



**Front View**



**80 KW Generator**



**Enclosed Loadout**



**Tunnel Fan Side**



**24 Ton Feed Tanks**

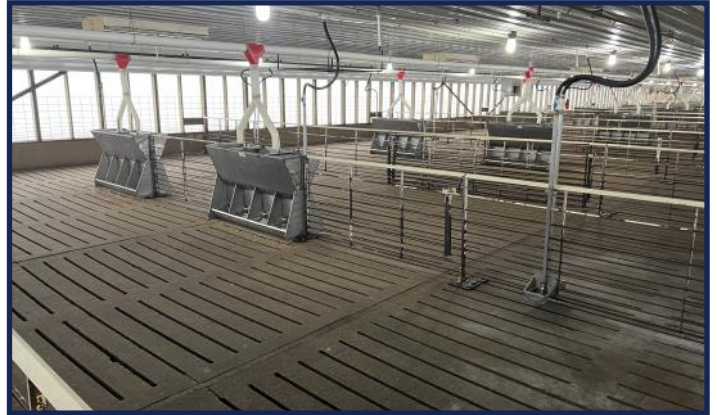
The information gathered for this brochure is from sources deemed reliable, but cannot be guaranteed by Growthland or its staff. All acres are considered more or less.

# Growthland

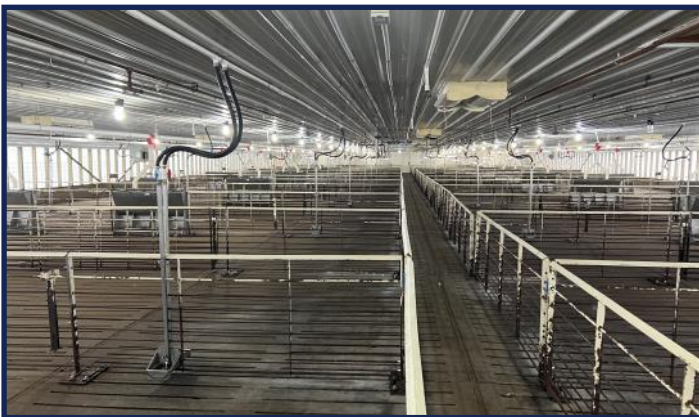
## Photos



**Controller**



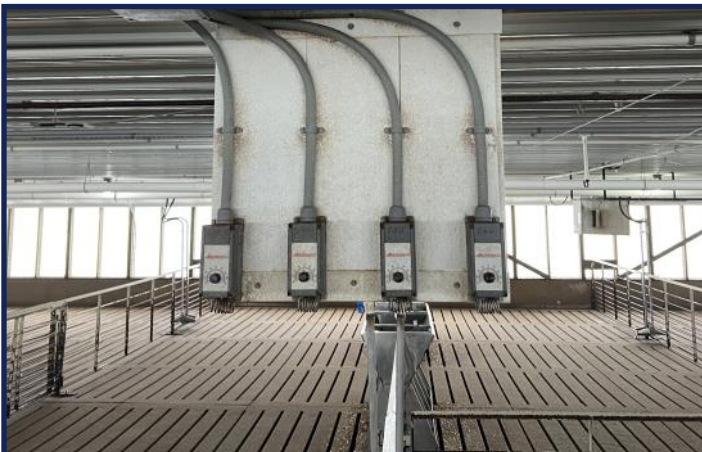
**Wet Dry Feeders**



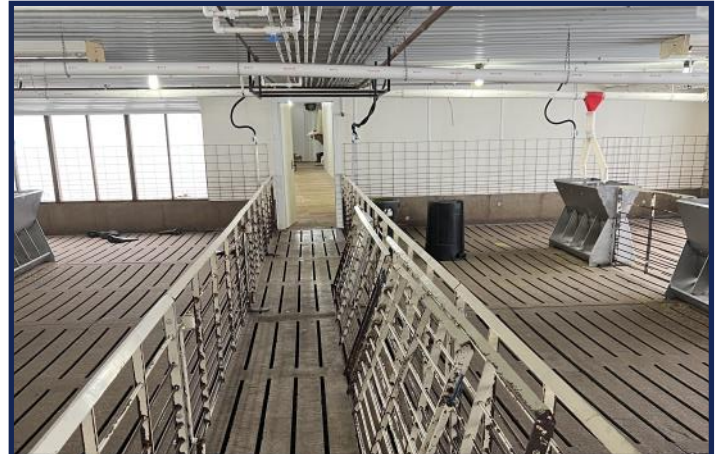
**Room Overview**



**Pre-Sort Pen Design**



**Backup Thermostats**



**Connecting Hallway Alley**

The information gathered for this brochure is from sources deemed reliable, but cannot be guaranteed by Growthland or its staff. All acres are considered more or less.

# Growthland

---

## Notes