

Growthland

2,000 Pig Spaces Available for Long Term Contract Finishing Arrangement Franklin County, IA



Property Highlights

- Design: Double Wide Two Room 2,000 Pig Space Feeder to Finish barn
- Ventilation: Tunnel Ventilation & Expert Series Two Controllers
- Pen Design: Small pen design, no pre-sort
- Feeders: Aqua Tube Wet-Dry Feeders
- Labor: Provided by Owner
- Desired Contract Terms: TBD; Owner desires a long-term contract and willing to invest in the site. Site is currently available.

Contact us:

5475 Dyer Ave, #141
Marion, IA 52302
Office: (319) 377-1143
www.growthland.com

Dean Schott, Licensed in Iowa
dean@growthland.com
Cell: 319-631-0050

The information gathered for this brochure is from sources deemed reliable, but cannot be guaranteed by Growthland or its staff. All acres are considered more or less.

Growthland

2,000 Pig Spaces
926 Franklin Ave
Franklin County, IA
2.36 Acres



Growthland

2,000 Pig Spaces
926 Franklin Ave
Franklin County, IA

Site Overview		
Building Type:	Feeder to Finish	
Year Built:	1994	
Size:	81' x 197.5'	
Number of Rooms:	1	2
Pig Spaces:	1,000	1,000
Interior Room Dimensions:	81' x 196'5"	81' x 196'5"
Pens per Room:	(37)9'8" x 18' (1) 8'8" x 18' (2) 8'8" x 14'9" (1) 9'8" x 14'9"	(37)9'8" x 18' (1) 8'8" x 18' (2) 8'8" x 14'9" (1) 9'8" x 14'9"
Office/WR:	Middle Work Room/Office Area	
Pit Depth:	8'	8'
Ventilation:	Power Tunnel	Power Tunnel
Ventilation Controller:	EXPERT Series 2	EXPERT Series 2
Emergency System(s):	AgriAlert/EDrop	AgriAlert/EDrop
Ceiling:	Plastic AG-TUF	Plastic AG-TUF
Flooring:	Concrete Slat	Concrete Slat
Feed System:	Model 75/300 Flex	Model 75/300 Flex
Feeders:	(20) 47" SS Aqua Tube Feeders	(20) 47" SS Aqua Tube Feeders
Waterers:	(20) Aqua Feeders	(20) Aqua Feeders
Load Out:	20' Portable Chute	

Growthland

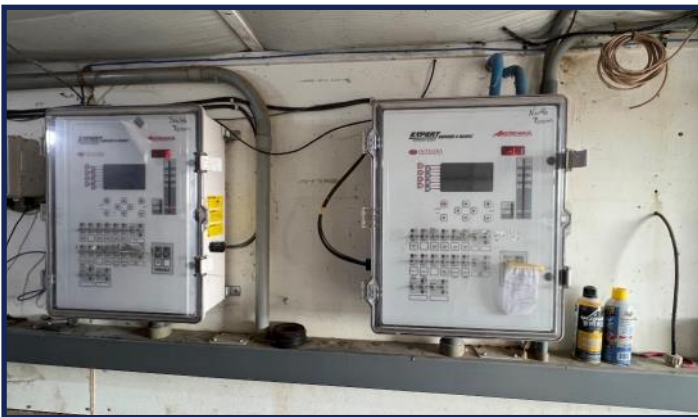
Photos



2,000 Head Finish Site



Exterior



EXPERT Series 2 Controllers



Interior



Dry Feeders and Slats



Interior

Growthland

Notes