

# Growthland

*Recently renamed from Agri-Management Services*

**5 Acres m/l  
Linn County, IA  
\$149,500**

**Acreage For Sale  
3018 Stone Rd, Springville**

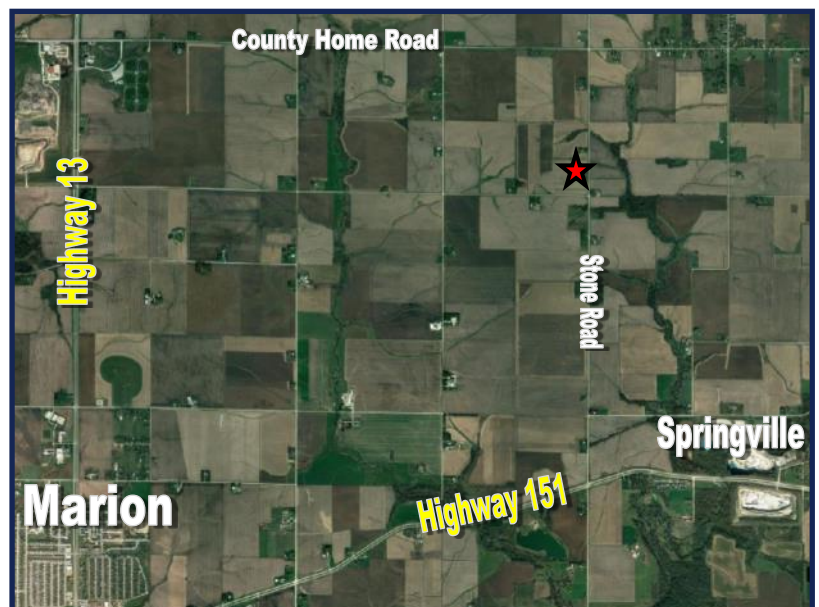


Located three miles east of Highway 13 and 2 miles north of Highway 151 in Section 13 of Marion East Township; at 3108 Stone Road. This nice 5 acre lot would make for an excellent building site and is less than a 10 minute drive from Marion. This parcel is pending approval from Linn County Planning and Zoning.

**School District:** Springville School District

**Estimated Taxes:** \$152 annually

**Possession:** At closing.



## Contact Us

5475 Dyer Avenue, Suite 141  
Marion, IA 52302  
(319) 377-1143  
[www.growthland.com](http://www.growthland.com)

John Airy, Licensed in IA  
[john@growthland.com](mailto:john@growthland.com)  
(319) 350-0474

The information gathered for this brochure is from sources deemed reliable, but cannot be guaranteed by Growthland, its owners or staff. All acres are considered more or less.