

# Growthland

*Recently renamed from Agri-Management Services*

**1.785 Acres m/l  
Linn County, IA  
\$124,900**

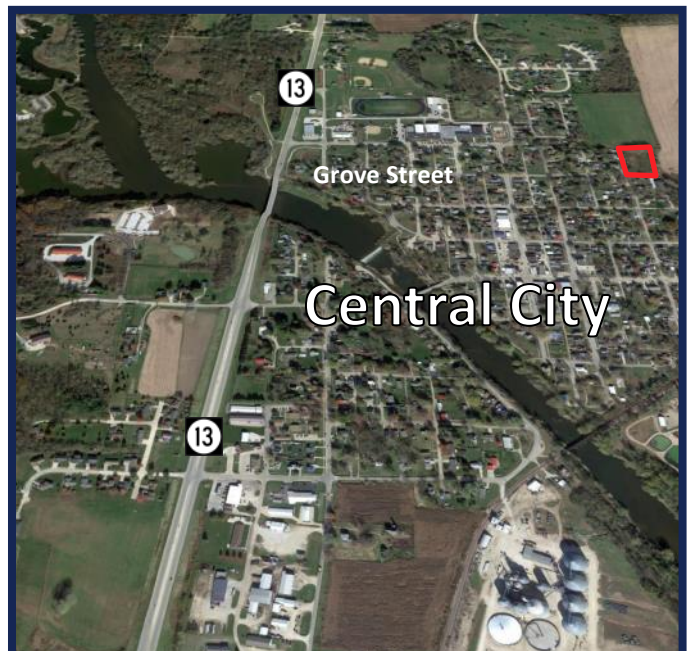
**Property For Sale**  
Grove St, Central City, Iowa



This property is located in the northeast quadrant of Central City, 20 minutes from Marion/Cedar Rapids with lots of options. Public utilities are at the property on the west side. The 1.7 acres could be used for one residence providing for an extra large lot or subdivided for more than one residence. The property also features many mature trees and is located at the corner of 2 quiet streets. A rare opportunity for a large lot with a country feel with the conveniences of city living. Take a look at all the options before this one is gone!

**School District:** Central City School District

**Taxes:** \$1,320 annually



## Contact Us

5475 Dyer Avenue, Suite 141  
Marion, IA 52302  
(319) 377-1143  
[www.growthland.com](http://www.growthland.com)

**John Airy, Licensed in IA**  
[john@growthland.com](mailto:john@growthland.com)  
(319) 350-0474

The information gathered for this brochure is from sources deemed reliable, but cannot be guaranteed by Growthland or its staff. All acres are considered more or less.