

Growthland

Recently renamed from Agri-Management Services

66 Acres m/l
Des Moines County, IA
\$399,000

Farm For Sale

This farm is well suited for the cow calf operator, the cattle building is open to the South for the livestock yard and has machinery storage also. It is set up with concrete, gating and guard rail. There is a creek, pond and a well for livestock. The pasture and fence are in good condition. The farm is on a paved road and has a potential building site for a home located in a excellent proximity to the building and road.

Taxes: \$1,284 annually

Possession: At closing.

FSA Farm Base Acres:

Commodity	Base Acres
Corn	17.62

Acreage Breakdown:

FSA Acres: 66.76 A m/l

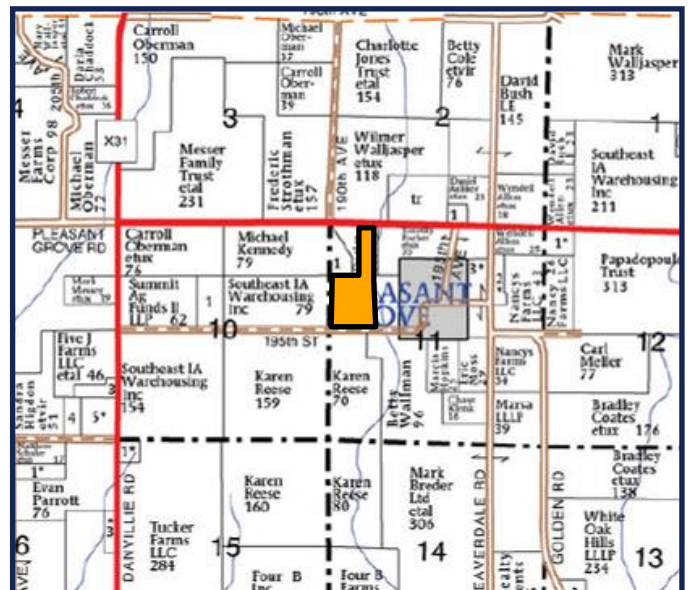
Assessor Acres: 62.38 A m/l

Cropland Acres: 17.62 A M/L

Location: Located west of Pleasant Grove in Section 11 of Pleasant Grove Township; bordered to the north by Pleasant Grove Road and to the south by 195th Street.

Cropland Soil Productivity: CSR2: 62.9

School District: Danville School District



Contact Us

5475 Dyer Avenue, Suite 141
 Marion, IA 52302
 (319) 377-1143
 www.growthland.com

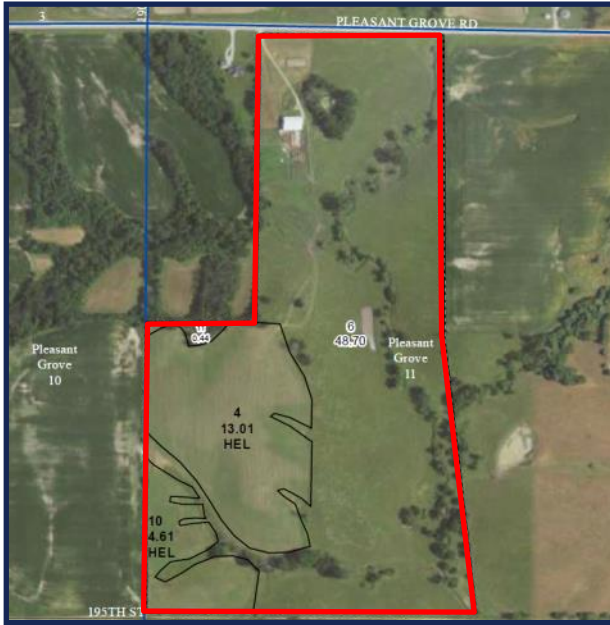
John Airy, Licensed in IA
 john@growthland.com
 (319) 350-0474

The information gathered for this brochure is from sources deemed reliable, but cannot be guaranteed by Growthland or its staff. All acres are considered more or less.

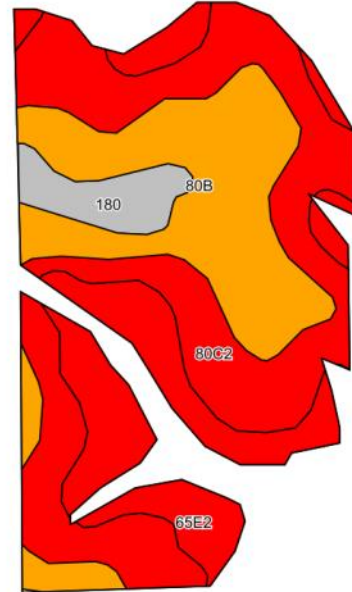
Growthland

Recently renamed from Agri-Management Services

FSA Map



Cropland Soil Map - CSR2



Code	Soil Description	Acres	% of field	CSR2	CSR2*
80C2	Clinton silt loam, 5 to 9 percent slopes, eroded	7.27	41.2%		69
80B	Clinton silt loam, 2 to 5 percent slopes	5.19	29.4%		80
65E2	Lindley loam, 14 to 18 percent slopes, moderately eroded	4.18	23.7%		28
180	Keomah silt loam, 1 to 3 percent slopes	0.99	5.6%		76
				Weighted Average	62.9

Map Provided By: **surety**
AGRIUSA, INC. 2014 www.AGRIUSA.com



Close up view of the building site and cattle yard

The information gathered for this brochure is from sources deemed reliable, but cannot be guaranteed by Growthland or its staff. All acres are considered more or less.

Growthland

Recently renamed from Agri-Management Services



View from the north looking south toward the building site



Livestock yard



Guardrail fencing



Pond located to the northeast of the building site



View from the north looking to the south



The creek running through the property

The information gathered for this brochure is from sources deemed reliable, but cannot be guaranteed by Growthland or its staff. All acres are considered more or less.