

Growthland

Recently renamed from Agri-Management Services

70 Acres m/l
Black Hawk County, IA
\$945,000 (\$13,500/Acre)

Farm for Sale
Triple Diamond, Inc.

Location: Located one half mile southwest of Hudson in Section 33 of Black Hawk Township; bordered to the south by Zaneta Road. Within a 15 minute drive to Cedar Falls/Waterloo.

Acreage Breakdown:
Cropland Acres: 69.32 A m/l
Taxable Acres: 69.37 A m/l

Soil Productivity:
Cropland CSR2: 86.5

School District: Hudson Community School District

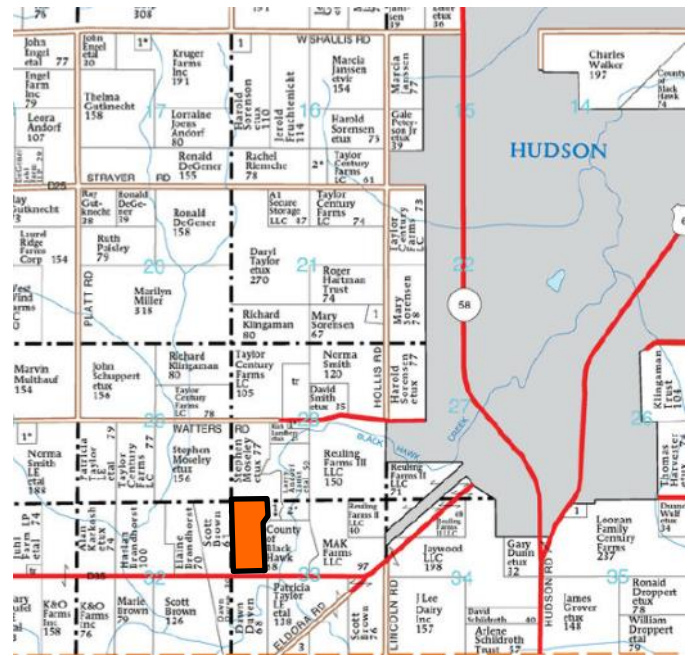
Taxes: \$2,366 annually

FSA Farm Base Acres:
Corn Base Acres: 69.30
Corn PLC Yield: 127

Comments: Rare chance to purchase an all tillable, high soil productivity within 15 minutes of Cedar Falls/Waterloo. Hard surface road on the south and Hudson is two miles to the east. **North half of farm has recently been tilled. See Page 3**

Possession: At closing, lease has been terminated and farm is open for 2022 crop season.

Closing: Buyer must cooperate with a 1031 exchange. Seller has a strong desire to close in 2021.



Contact Us

5475 Dyer Avenue, Suite 141
Marion, IA 52302
319-377-1143
www.growthland.com

John Airy, licensed in IA
john@growthland.com
(319)-350-0474

The information gathered for this brochure is from sources deemed reliable, but cannot be guaranteed by Growthland or its staff. All acres are considered more or less.

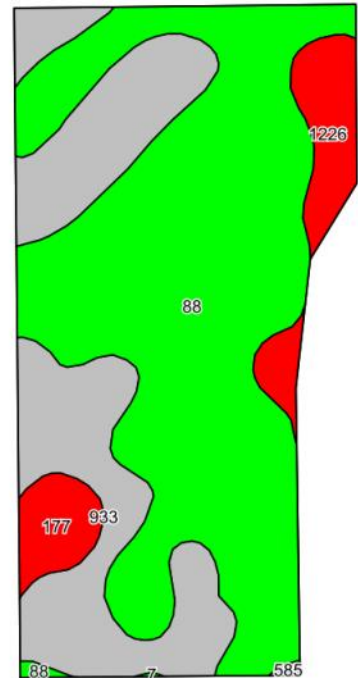
Growthland

Recently renamed from Agri-Management Services

FSA Map



Cropland Soil Map - CSR2



Code	Soil Description	Acres	% of field	CSR2	CSR2*
88	Nevin silty clay loam, 0 to 2 percent slopes	41.65	61.1%		95
933	Sawmill silty clay loam, shallow loess, 0 to 2 percent	19.60	28.8%		78
1226	Lawler loam, 0 to 2 percent slopes, rarely flooded	4.36	6.4%		59
177	Saude loam, 0 to 2 percent slopes	2.42	3.6%		60
585	Coland-Spillville complex, 0 to 2 percent slopes,	0.10	0.1%		70
Weighted Average					86.5



The information gathered for this brochure is from sources deemed reliable, but cannot be guaranteed by Growthland or its staff. All acres are considered more or less.

Growthland

Recently renamed from Agri-Management Services

Tile Map



The information gathered for this brochure is from sources deemed reliable, but cannot be guaranteed by Growthland or its staff. All acres are considered more or less.

Growthland

Recently renamed from Agri-Management Services

Photos



View from the South Looking North



View from the North Looking South

The information gathered for this brochure is from sources deemed reliable, but cannot be guaranteed by Growthland or its staff. All acres are considered more or less.